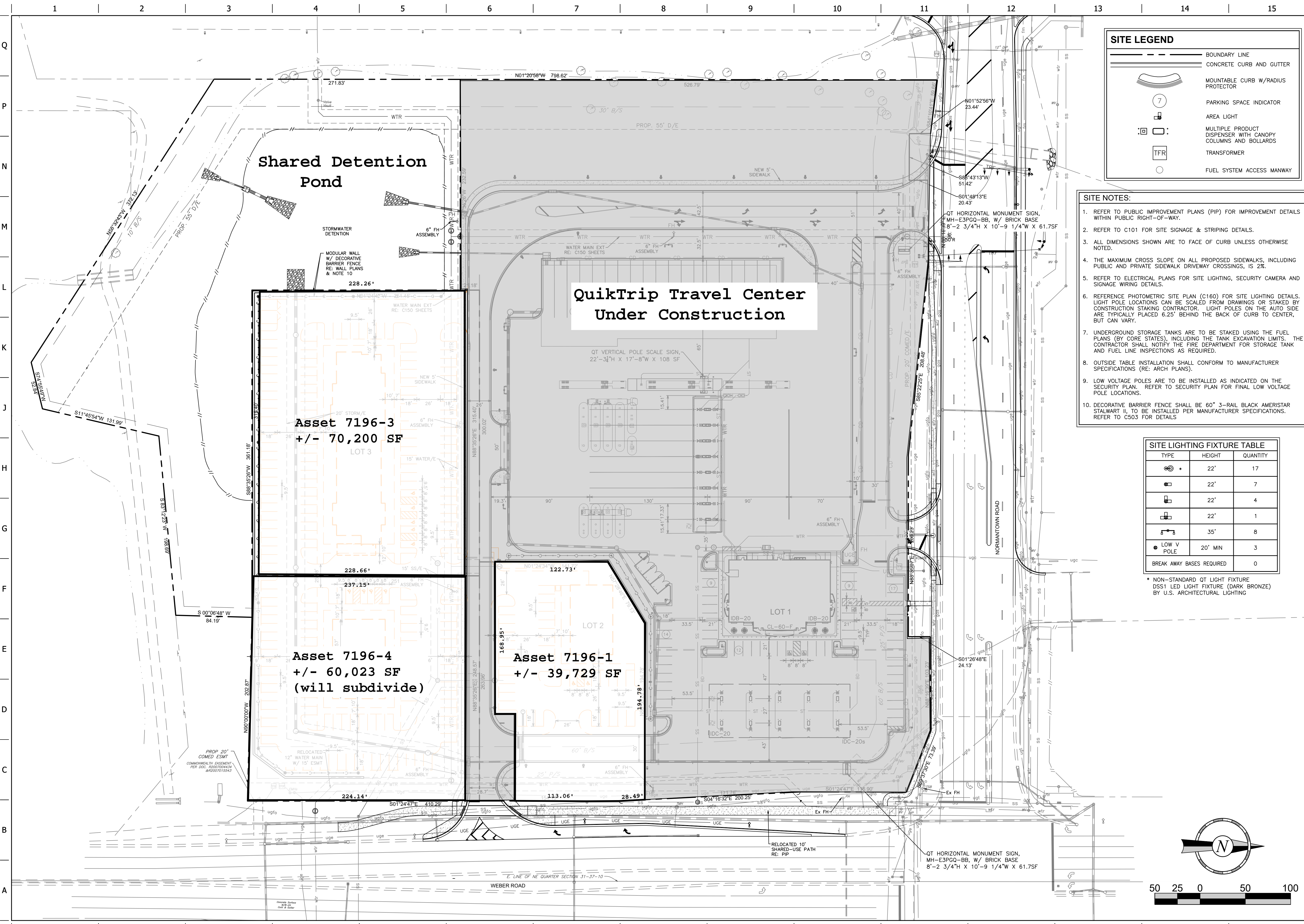


FILE LOCATION: \\DESIGN\PROJECTS\7196 Romeoville, IL\99-7196 Civil.dwg TAB NAME:Site USER:Comar SAVED:6/2/2023 6:05 PM PLOTTED:6/2/2023 6:07 PM



SITE LEGEND

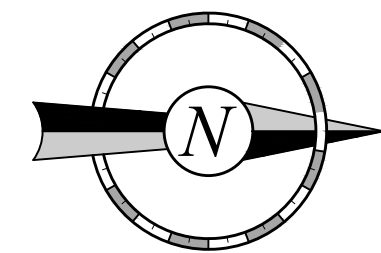
- BOUNDARY LINE
- CONCRETE CURB AND GUTTER
- MOUNTABLE CURB W/RADIUS PROTECTOR
- PARKING SPACE INDICATOR
- AREA LIGHT
- MULTIPLE PRODUCT DISPENSER WITH CANOPY COLUMNS AND BOLLARDS
- TRANSFORMER
- FUEL SYSTEM ACCESS MANWAY

- SITE NOTES:**
- REFER TO PUBLIC IMPROVEMENT PLANS (PIP) FOR IMPROVEMENT DETAILS WITHIN PUBLIC RIGHT-OF-WAY.
 - REFER TO C101 FOR SITE SIGNAGE & STRIPING DETAILS.
 - ALL DIMENSIONS SHOWN ARE TO FACE OF CURB UNLESS OTHERWISE NOTED.
 - THE MAXIMUM CROSS SLOPE ON ALL PROPOSED SIDEWALKS, INCLUDING PUBLIC AND PRIVATE SIDEWALK DRIVEWAY CROSSINGS, IS 2%.
 - REFER TO ELECTRICAL PLANS FOR SITE LIGHTING, SECURITY CAMERA AND SIGNAGE WIRING DETAILS.
 - REFERENCE PHOTOMETRIC SITE PLAN (C160) FOR SITE LIGHTING DETAILS. LIGHT POLE LOCATIONS CAN BE SCALED FROM DRAWINGS OR STAKED BY CONSTRUCTION STAKING CONTRACTOR. LIGHT POLES ON THE AUTO SIDE ARE TYPICALLY PLACED 6.25' BEHIND THE BACK OF CURB TO CENTER, BUT CAN VARY.
 - UNDERGROUND STORAGE TANKS ARE TO BE STAKED USING THE FUEL PLANS (BY CORE STATES), INCLUDING THE TANK EXCAVATION LIMITS. THE CONTRACTOR SHALL NOTIFY THE FIRE DEPARTMENT FOR STORAGE TANK AND FUEL LINE INSPECTIONS AS REQUIRED.
 - OUTSIDE TABLE INSTALLATION SHALL CONFORM TO MANUFACTURER SPECIFICATIONS (RE: ARCH PLANS).
 - LOW VOLTAGE POLES ARE TO BE INSTALLED AS INDICATED ON THE SECURITY PLAN. REFER TO SECURITY PLAN FOR FINAL LOW VOLTAGE POLE LOCATIONS.
 - DECORATIVE BARRIER FENCE SHALL BE 60" 3-RAIL BLACK AMERISTAR STALWART II, TO BE INSTALLED PER MANUFACTURER SPECIFICATIONS. REFER TO C503 FOR DETAILS.

SITE LIGHTING FIXTURE TABLE

TYPE	HEIGHT	QUANTITY
	22'	17
	22'	7
	22'	4
	22'	1
	35'	8
	20' MIN	3
BREAK AWAY BASES REQUIRED		0

* NON-STANDARD QT LIGHT FIXTURE
DS51 LED LIGHT FIXTURE (DARK BRONZE)
BY U.S. ARCHITECTURAL LIGHTING



SHEET TITLE:
SITE PLAN

SHEET NUMBER:
C100