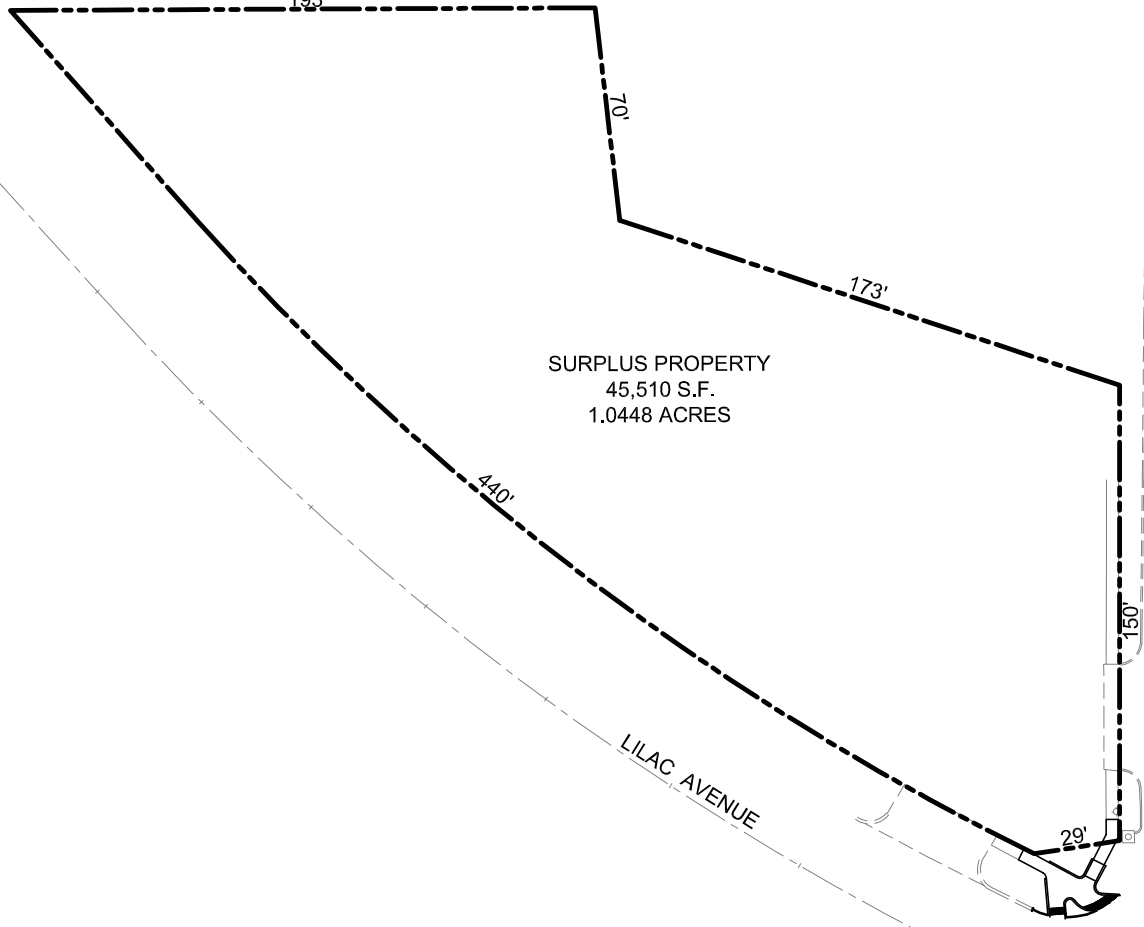


P:\E-LOCATIONS\Drawings\St. Louis\Surplus Property\Subarea\08-0605\_Surplus\_1.dwg 7/6/2014 4:52 PM

PROPERTY DESCRIPTION:

LOCATED ON THE SOUTHWEST CORNER OF BELGROVE DRIVE AND LILAC AVENUE, SAINT LOUIS COUNTY, MISSOURI. THIS PROPERTY HAS 150 FEET OF FRONTAGE ON BELGROVE DRIVE AND 440 FEET OF FRONTAGE ON LILAC AVENUE. CONTAINS 45,510 SQUARE FEET, OR 1.0448 ACRES, MORE OR LESS.



PROJECT NO.:

QuikTrip No. 4605  
10845 LILAC AVENUE  
ST LOUIS COUNTY, MO



© COPYRIGHT QUIKTRIP CORPORATION (QTC) ALL OTHER RIGHTS RESERVED. REPRODUCTION, TRANSMISSION, OR DISTRIBUTION OF THIS INFORMATION IS PROHIBITED WITHOUT WRITTEN PERMISSION.

PROTOTYPE:	P-77 (11/01/03)
DIVISION:	761
VERSION:	001
DESIGNED BY:	
DRAWN BY:	KSR
REVIEWED BY:	

REV.	DATE	DESCRIPTION	ORIGINAL ISSUE DATE:

SHEET TITLE:  
SURPLUS PROPERTY

SHEET NUMBER:  
1