



RETAIL PADS AVAILABLE FRONTING WEBER ROAD

Weber Road & Normantown Road
Romeoville, IL



BRENDAN WATT

812.606.2822

brendan@greatstreetrealty.com

SULLY STADLER

847.472.5013

sully@greatstreetrealty.com

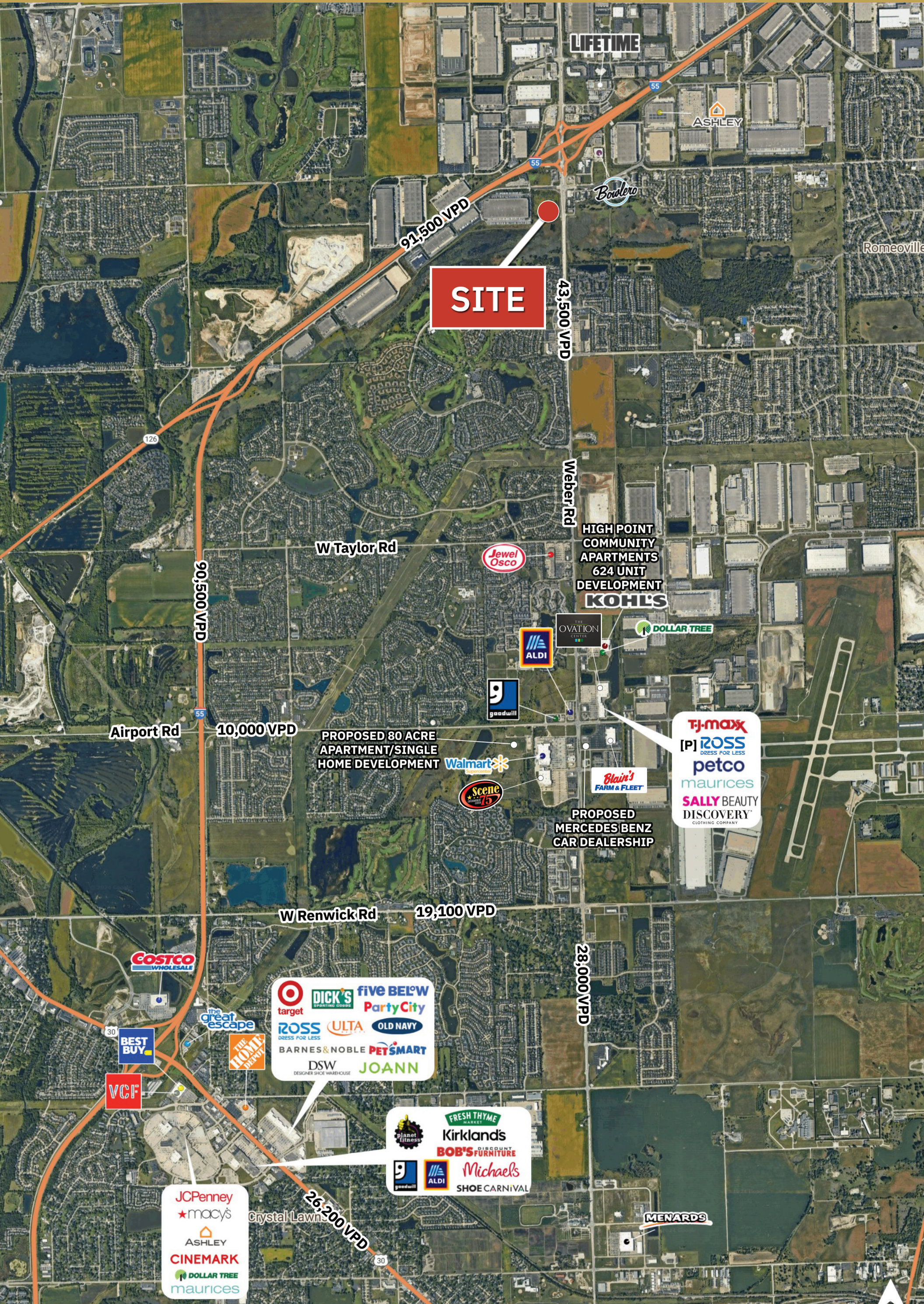
CALEB MANN

913.375.2922

caleb@greatstreetrealty.com



AERIAL



RETAIL PADS AVAILABLE FRONTING WEBER ROAD
Weber Road & Normantown Road | Romeoville, IL



PROPERTY OVERVIEW



- Retail pads available for sale or BTS with significant frontage on Weber Road
- Located two blocks from I-55 in a dense business area with 5,119 employees in a 1-mile radius
- Traffic counts: 91,500 VPD on I-55 and 43,500 VPD on Weber Rd
- Adjacent to QuikTrip Travel Center currently under construction

DEMOGRAPHICS		
TOTAL POPULATION	1 MILE	4,435
	3 MILE	65,223
	5 MILE	160,721
DAYTIME POPULATION	1 MILE	5,167
	3 MILE	26,073
	5 MILE	55,138
AVERAGE HH INCOME	1 MILE	\$98,230
	3 MILE	\$126,881
	5 MILE	\$143,770



SITE PLAN

