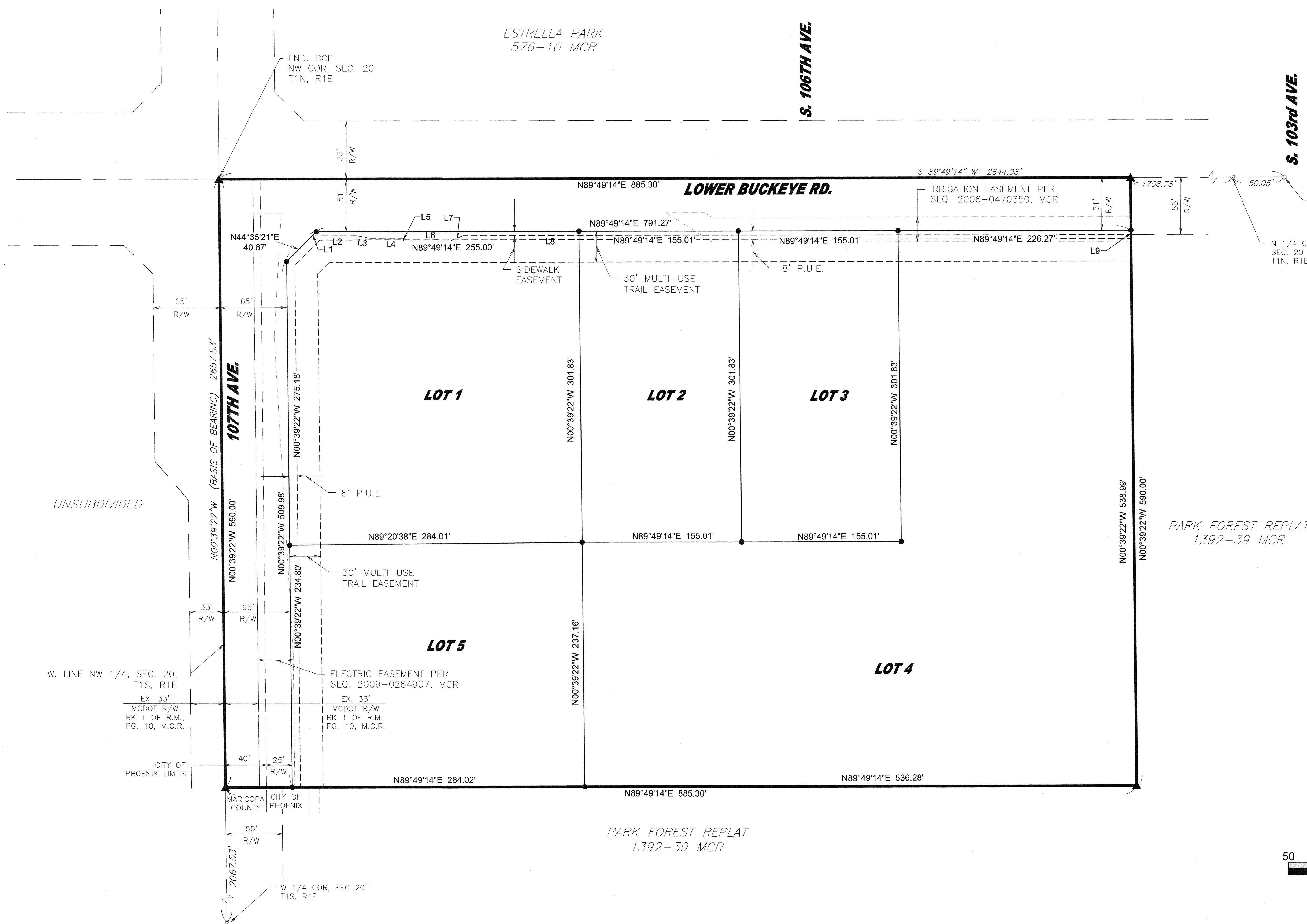


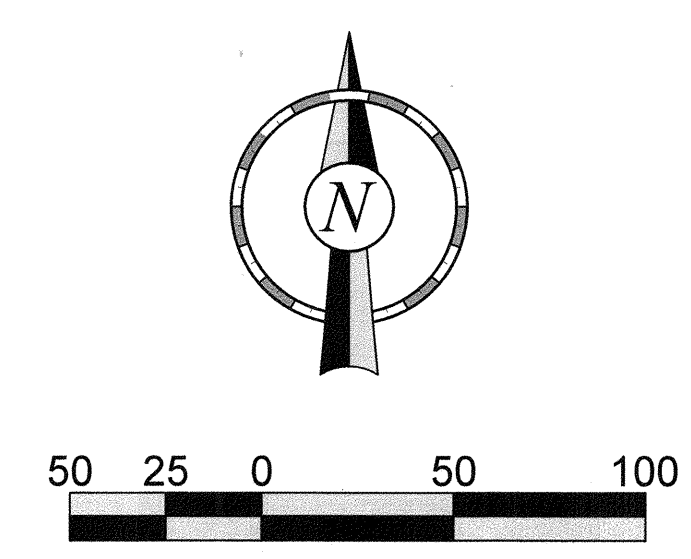
OFFICIAL RECORDS OF
 MARICOPA COUNTY RECORDER
 STEPHEN RICHER
 2023-0387221 07/25/23 03:30
 BOOK 1749 PAGE 20
 PAPER RECORDING
 0555957-2-1-1
 br-adt ek

LEGEND

- STREET CENTERLINE MONUMENT, FOUND CAP AS NOTED
- FOUND PROPERTY CORNER, AS NOTED
- PROPERTY CORNER, TO BE SET
- ▲ SUBDIVISION CORNER, TO BE SET PER MAG DETAIL 120-1-B
- SUBDIVISION BOUNDARY LINE
- PROPERTY LINE
- CENTER LINE
- SECTION LINE
- RIGHT OF WAY LINE
- EASEMENT LINE
- CITY LIMITS LINE
- B.C.H.H. BRASS CAP IN HANDHOLE
- B.C.FL. BRASS CAP FLUSH
- FND. FOUND
- ESMT. EASEMENT
- P.U.E. PUBLIC UTILITY EASEMENT
- R/W RIGHT-OF-WAY
- MCR MARICOPA COUNTY RECORDER
- APN ASSESSOR'S PARCEL NUMBER
- SVT SIGHT VISIBILITY TRIANGLE



Line #	Length	Direction
L1	5.63'	S44° 35' 21"W
L2	42.87'	N89° 49' 14"E
L3	13.77'	S80° 03' 17"E
L4	32.30'	N89° 49' 14"E
L5	2.58'	S0° 10' 46"E
L6	45.00'	N89° 49' 14"E
L7	14.05'	N68° 58' 35"E
L8	648.42'	N89° 49' 14"E
L9	4.00'	N0° 39' 22"W



PLAT# 220049
 KIVA# 21-3370 Q.S.# 6-3

The WLB Group
 Engineering • Planning • Surveying
 Landscape Architecture • Urban Design
 Offices located in: Tucson, Phoenix,
 Flagstaff, and Las Vegas, NV.
 1600 W Broadway Rd, Ste. 150
 Tempe Az. 85282 PH.(480) 736-1600

QUIKTRIP #1449 @ W. LOWER BUCKEYE RD. & S. 107TH AVE.
 A PORTION OF THE NORTHWEST QUARTER
 OF SECTION 20, TOWNSHIP 1 NORTH, RANGE 1 EAST,
 OF THE GILA AND SALT RIVER BASE AND MERIDIAN,
 MARICOPA COUNTY, ARIZONA

No.	Date	Item	Scale	Sheet
			1" = 50'	2
			Job # 221018-A-002	
			Date 4-11-23	
			Drawn By CLL/JAW	2
Revisions			Checked By CDW	

N:\10007\Store 1449\01 Civil\00 Survey\Final Plat\05-1449 FR.dwg