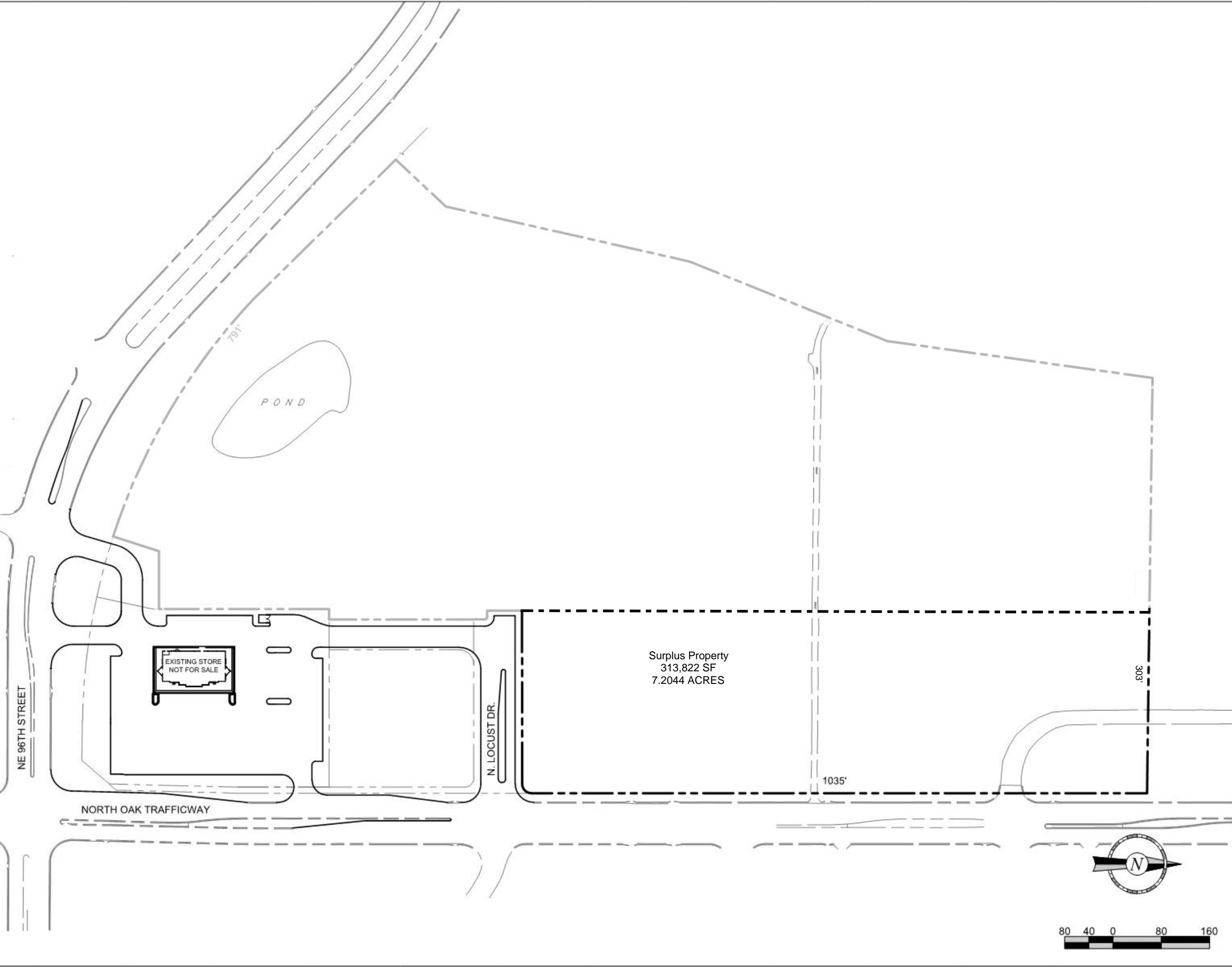


**PROPERTY DESCRIPTION:**

LOCATED TO THE NORTH AND WEST OF THE INTERSECTION OF NORTH OAK TRAFFICWAY AND NORTH EAST 96TH STREET, KANSAS CITY, MISSOURI. THIS PROPERTY HAS 1,035 FEET OF FRONTAGE ON NORTH OAK. CONTAINS 313,822 SQUARE FEET, OR 7.2044 ACRES, MORE OR LESS.



PROJECT NO.:

**QuikTrip No. 4221-3**  
 NORTH OAK TRFFICWAY & NE 96th STREET  
 KANSAS CITY, MO



© COPYRIGHT QUIKTRIP CORPORATION 2011  
 ANY UNAUTHORIZED USE, REPRODUCTION,  
 PUBLICATION, DISTRIBUTION, OR SALE IN  
 WHOLE OR IN PART, IS STRICTLY FORBIDDEN.

PROTOTYPE: P-71 (05/01/12)  
 DIVISION:  
 VERSION: 001  
 DESIGNED BY:  
 DRAWN BY:  
 REVIEWED BY:

| REV | DATE | DESCRIPTION |
|-----|------|-------------|
|     |      |             |
|     |      |             |
|     |      |             |
|     |      |             |

ORIGINAL ISSUE DATE:

SHEET TITLE:  
 SURPLUS PROPERTY

SHEET NUMBER:  
 1