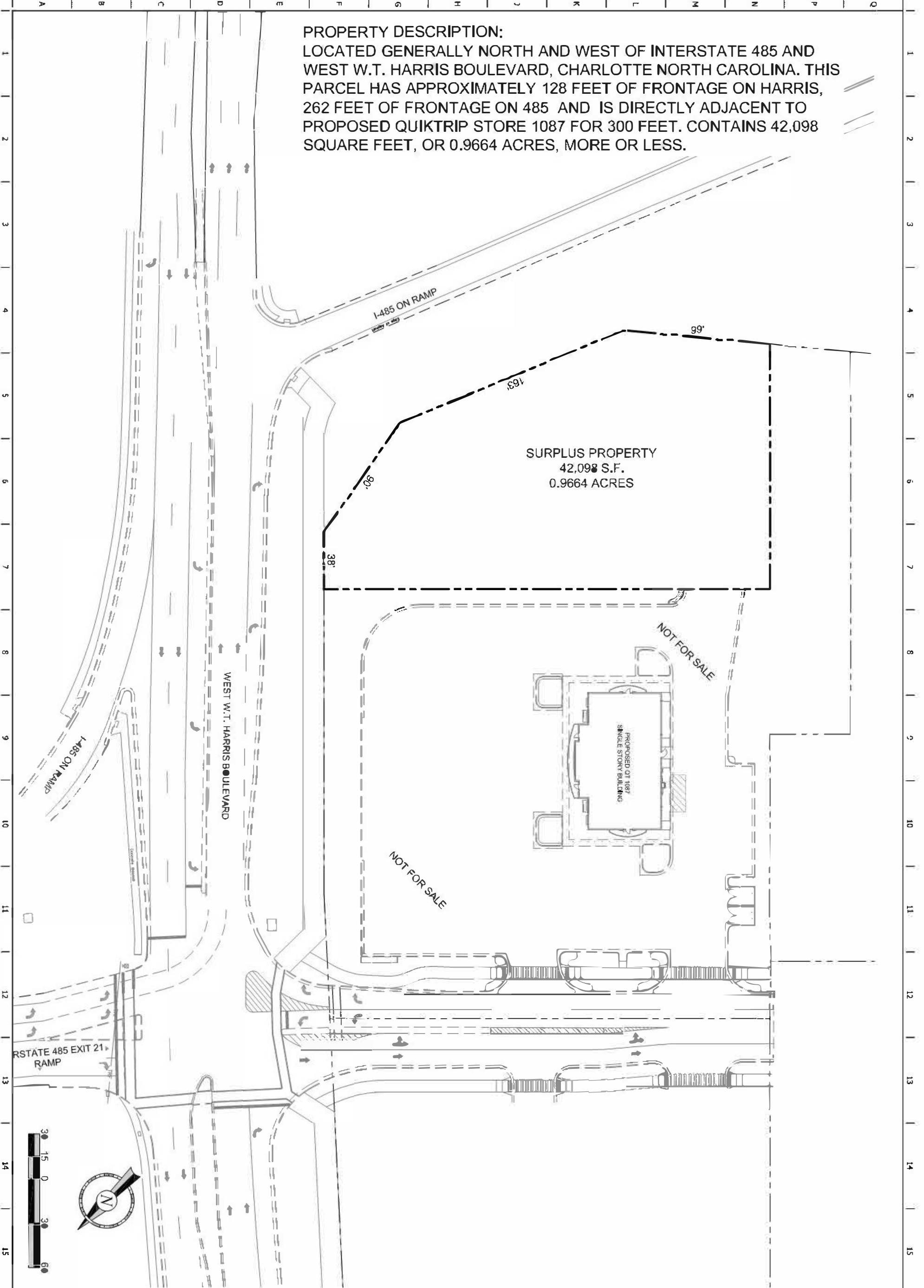


PROPERTY DESCRIPTION:

LOCATED GENERALLY NORTH AND WEST OF INTERSTATE 485 AND WEST W.T. HARRIS BOULEVARD, CHARLOTTE NORTH CAROLINA. THIS PARCEL HAS APPROXIMATELY 128 FEET OF FRONTAGE ON HARRIS, 262 FEET OF FRONTAGE ON 485 AND IS DIRECTLY ADJACENT TO PROPOSED QUIKTRIP STORE 1087 FOR 300 FEET. CONTAINS 42,098 SQUARE FEET, OR 0.9664 ACRES, MORE OR LESS.



1	SURPLUS PROPERTY
1	SHEET NUMBER

REV	DATE	DESCRIPTION

ORIGINAL ISSUE DATE:

PROJECT NO. E1087-2
DIVISION
DESIGNED BY
DRAWN BY
REVIEWED BY



QuikTrip No. E1087-2

WEST WT HARRIS BLVD & INTERSTAE 485
CHARLOTTE, NC

PROJECT NUMBER
