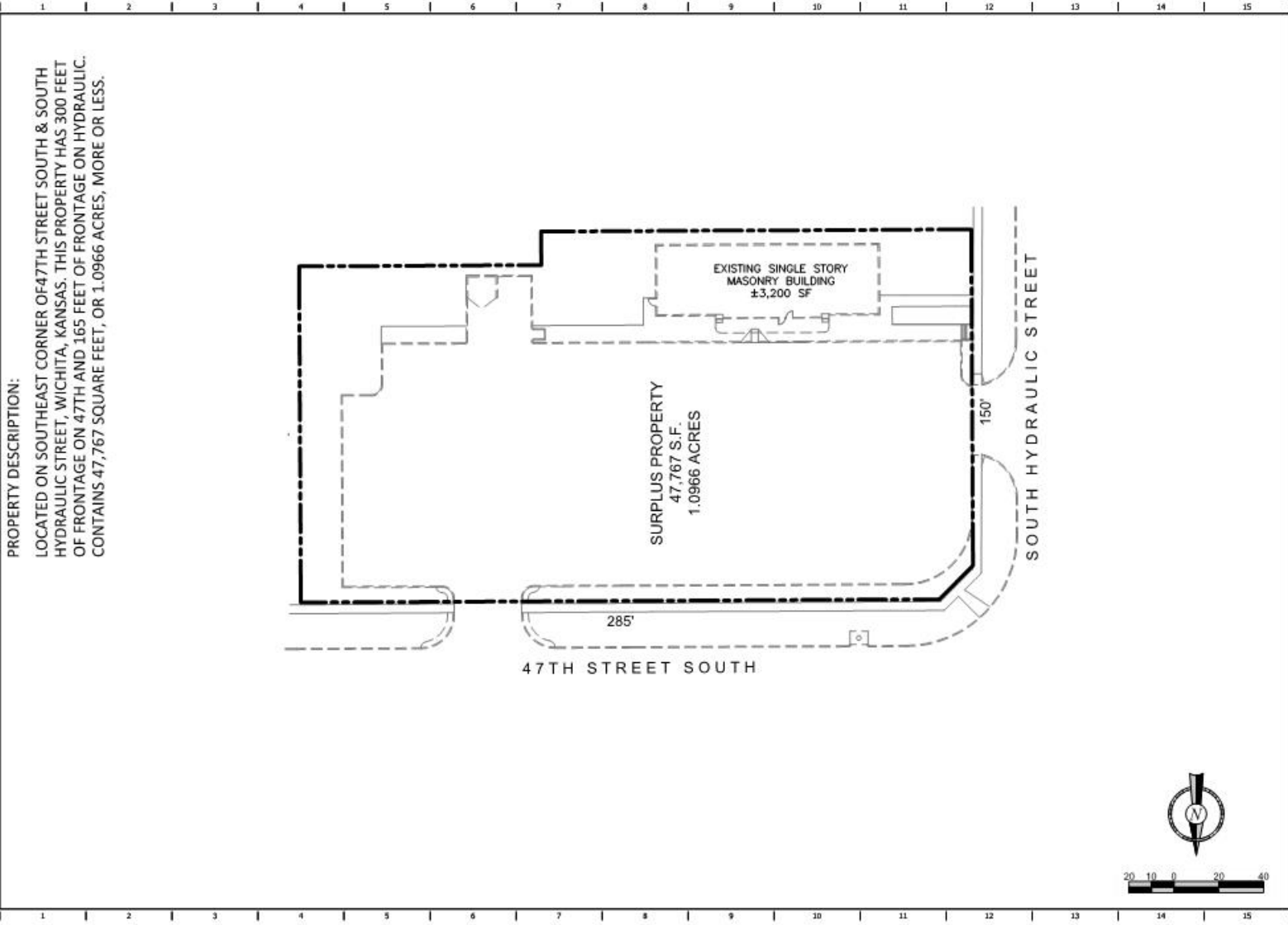


FILE: L:\DRG\ENR\1\enr_01\040 -Surplus Property\enr_01-4038 Surplus Prop.dwg (1/14/2014 10:57 AM) SURPLUS PROPERTY 4356



PROPERTY DESCRIPTION:

LOCATED ON SOUTHEAST CORNER OF 47TH STREET SOUTH & SOUTH HYDRAULIC STREET, WICHITA, KANSAS. THIS PROPERTY HAS 300 FEET OF FRONTAGE ON 47TH AND 165 FEET OF FRONTAGE ON HYDRAULIC. CONTAINS 47,767 SQUARE FEET, OR 1.0966 ACRES, MORE OR LESS.

SURPLUS PROPERTY
47,767 S.F.
1.0966 ACRES

EXISTING SINGLE STORY
MASONRY BUILDING
±3,200 SF

47TH STREET SOUTH

SOUTH HYDRAULIC STREET

PROJECT NO.	
QUICKTRIP No. 4356	
4808 SOUTH HYDRAULIC STREET WICHITA, KS	
PROJECT NO.	
DATE	
DESIGNED BY	
CHECKED BY	
APPROVED BY	
DATE	
ORIGINAL ISSUE DATE:	
SHEET TITLE:	SURPLUS PROPERTY
SHEET NUMBER:	1