

LAND FOR SALE

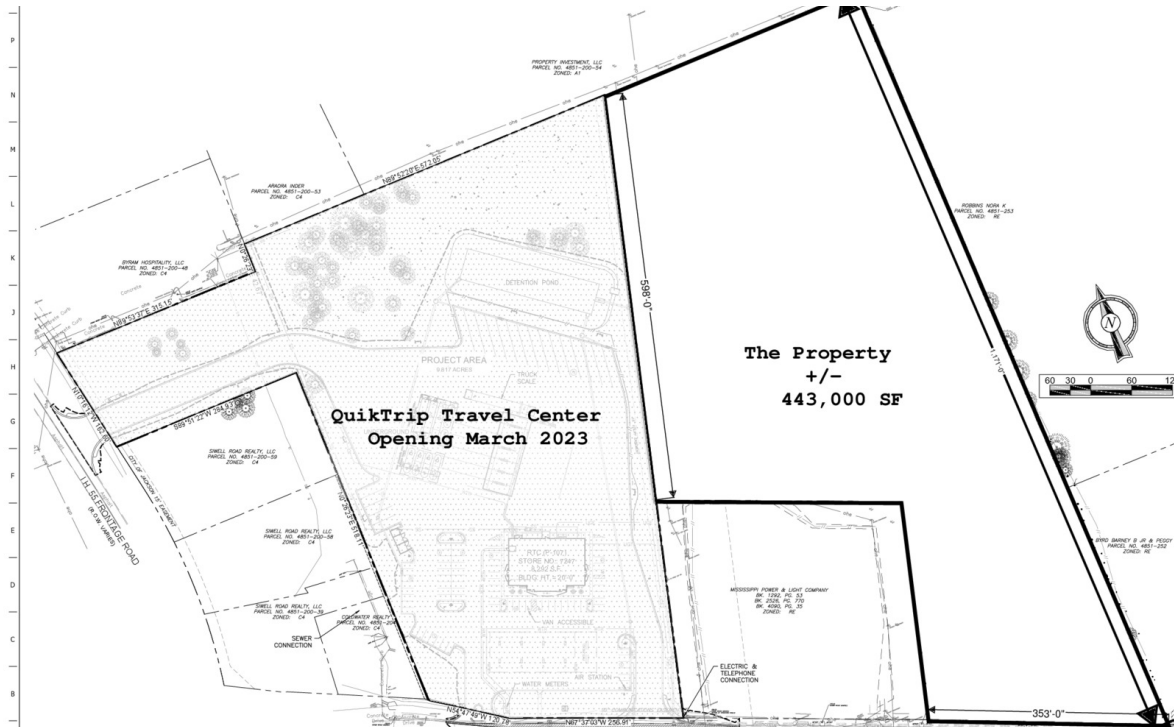
PRICE REDUCTION-10.17 ACRES  
ON SIWELL ROAD, BYRAM, NEXT  
TO NEW QUIKTRIP  
CONVENIENCE STORE

7516 S. SIWELL ROAD BYRAM, MS 39272



DAVID MOSAL, CCIM  
601.941.0597  
david@speedcres.com

LAND FOR SALE



**PROPERTY DESCRIPTION**

Ready for Development. Excess property from a brand new QuikTrip Travel center

**PROPERTY HIGHLIGHTS**

- Adjacent to the brand New QuikTrip Convenience Store
- Easy access to I-55 North and South.
- Just miles south of I-20
- Frontage on Siwell and runs North and wraps around Entergy Substation

**OFFERING SUMMARY**

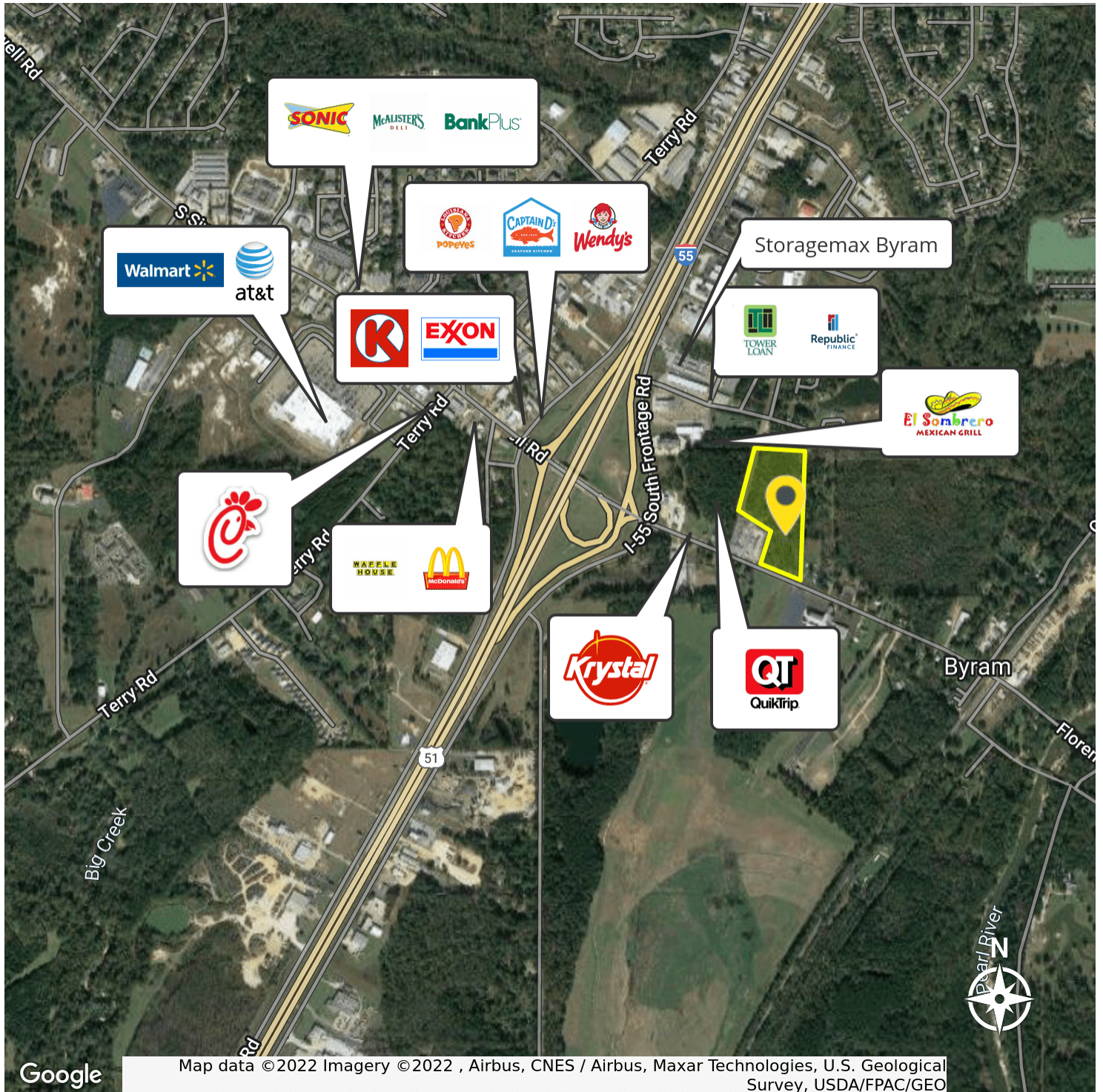
Sale Price:	\$699,000
Lot Size:	10.17 Acres

DEMOGRAPHICS	1 MILE	3 MILES	5 MILES
Total Households	514	5,210	12,075
Total Population	1,140	13,353	30,490
Average HH Income	\$61,028	\$72,200	\$66,733

**DAVID MOSAL, CCIM**  
601.941.0597  
david@speedcres.com



LAND FOR SALE



DAVID MOSAL, CCIM  
601.941.0597  
david@speedcres.com



LAND FOR SALE



LOCATION OVERVIEW

Byram is a suburb of Jackson with a population of 11,519. Byram is in Hinds County. Living in Byram offers residents a sparse suburban feel and most residents own their homes. Many families and young professionals live in Byram and boast quick access to I-55 which goes south to New Orleans or north to Memphis and I-20 which runs east and west from Dallas all the way to Atlanta.

Map data ©2024 Imagery ©2024 Airbus, Maxar Technologies, U.S. Geological Survey, USDA/FPAC/GEO

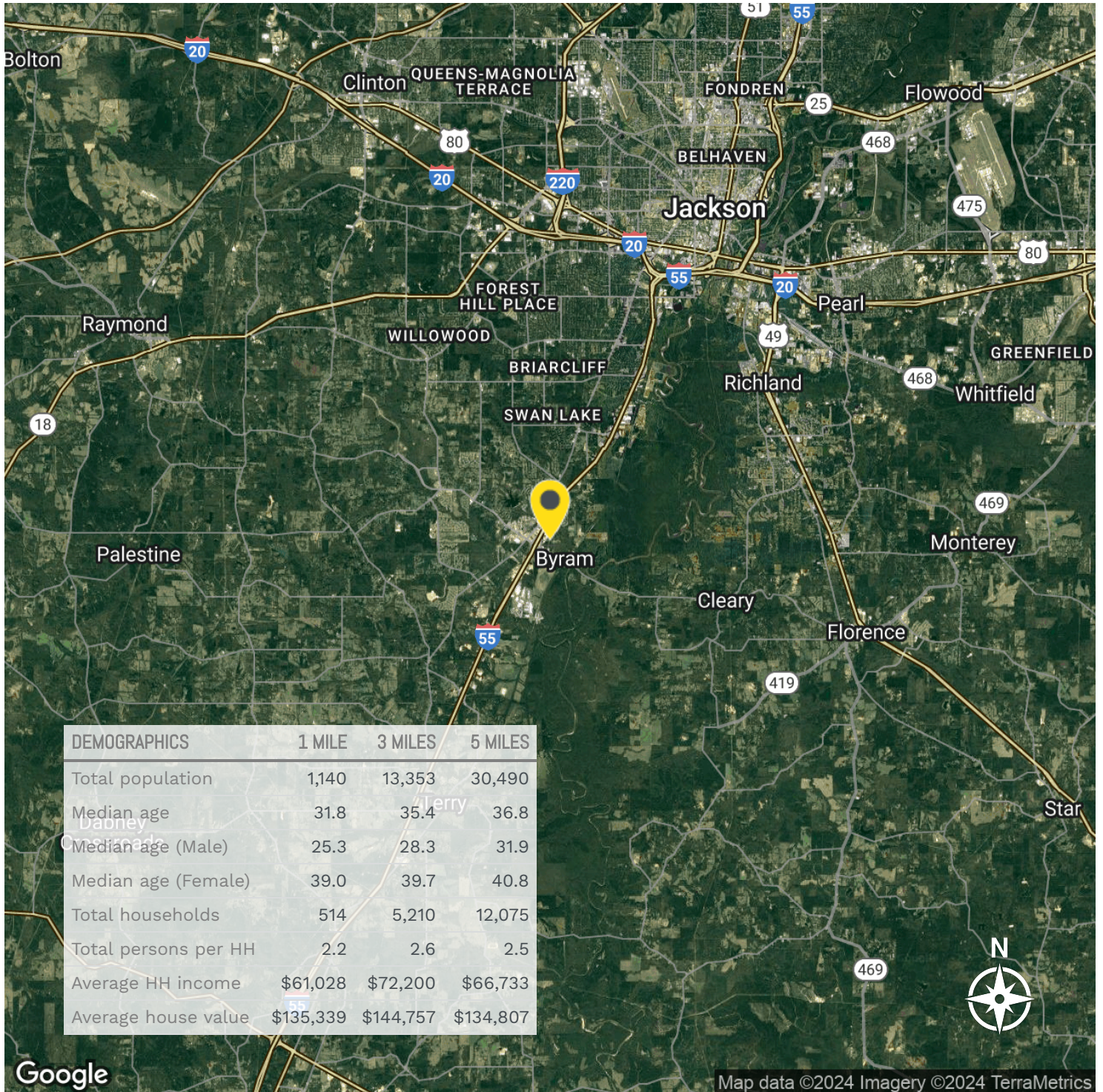
**DAVID MOSAL, CCIM**

601.941.0597

david@speedcres.com



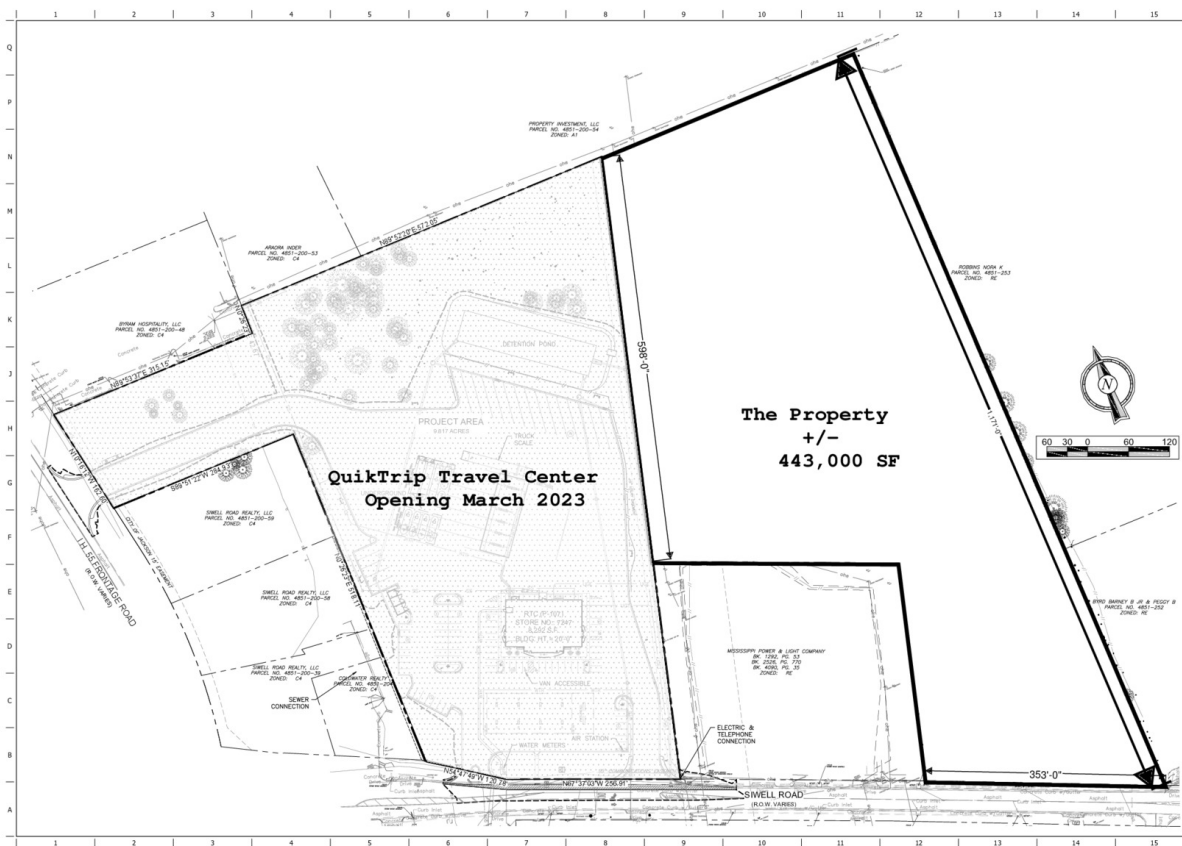
LAND FOR SALE



**DAVID MOSAL, CCIM**  
601.941.0597  
david@speedcres.com



LAND FOR SALE



DAVID MOSAL, CCIM  
601.941.0597  
david@speedcres.com

LAND FOR SALE



CCIM

**DAVID MOSAL, CCIM**

david@speedcres.com

601.941.0597

MS #S-40709

**DAVID MOSAL, CCIM**

601.941.0597

david@speedcres.com