

PROPERTY DESCRIPTION: LOCATED GENERALLY NORTH AND WEST OF THE INTERSECTION OF INTERSTATE HIGHWAY 35 AND SCHWAB ROAD, SCHERTZ, TEXAS. THIS PROPERTY HAS 291 FEET OF FRONTAGE ON INTERSTATE HIGHWAY 35. CONTAINS 81,893 SQUARE FEET OR 1.8800 ACRES MORE OR LESS.

NOT FOR SALE

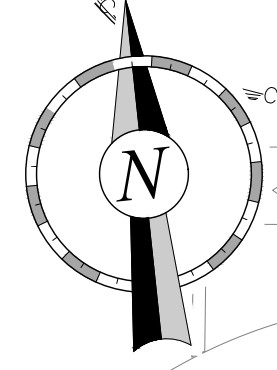
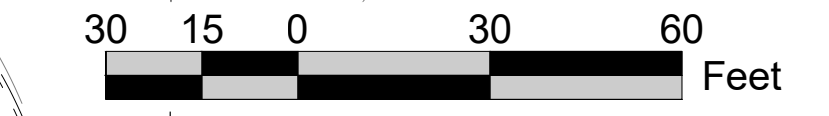
NOT FOR SALE

SURPLUS PROPERTY
81,893 S.F.
1.8800 ACRES

1 STORY QUIK TRIP BUILDING

ABOVE GROUND DETENTION AREA

INTERSTATE HIGHWAY NO. 35



FILE LOCATION: C:\Users\jot\OneDrive\Documents\Projects\82-Austin-Sm Antonio\82-Surplus Property Exhibits\82-E4032-Surplus 1.dwg TAB NAME: Surplus 1.dwg USER: jbarren SAVED: 06/15/2022 2:23 PM PLOTTED: 06/15/2022 2:26 PM

PROJECT NO.: #####

QuikTrip No. E-4032
23953 IH 35 N
SCHERTZ, TX



© COPYRIGHT QUIKTRIP CORPORATION 2011
ANY UNAUTHORIZED USE, REPRODUCTION,
PUBLICATION, DISTRIBUTION, OR SALE IN
WHOLE OR IN PART, IS STRICTLY FORBIDDEN.

PROTOTYPE: P-110 (5/01/22)
DIVISION:
VERSION: 001
DESIGNED BY:
DRAWN BY:
REVIEWED BY:

REV / DATE	DESCRIPTION	ORIGINAL ISSUE DATE:

SHEET TITLE:
INITIAL SITE PLAN

SHEET NUMBER:
0