



 **+/- 45,470 SF**
Zoned Commercial
AVAILABLE FOR SALE

For Sale →

3551 HY POINT INDUSTRIAL PARK
Rolla, MO 65401

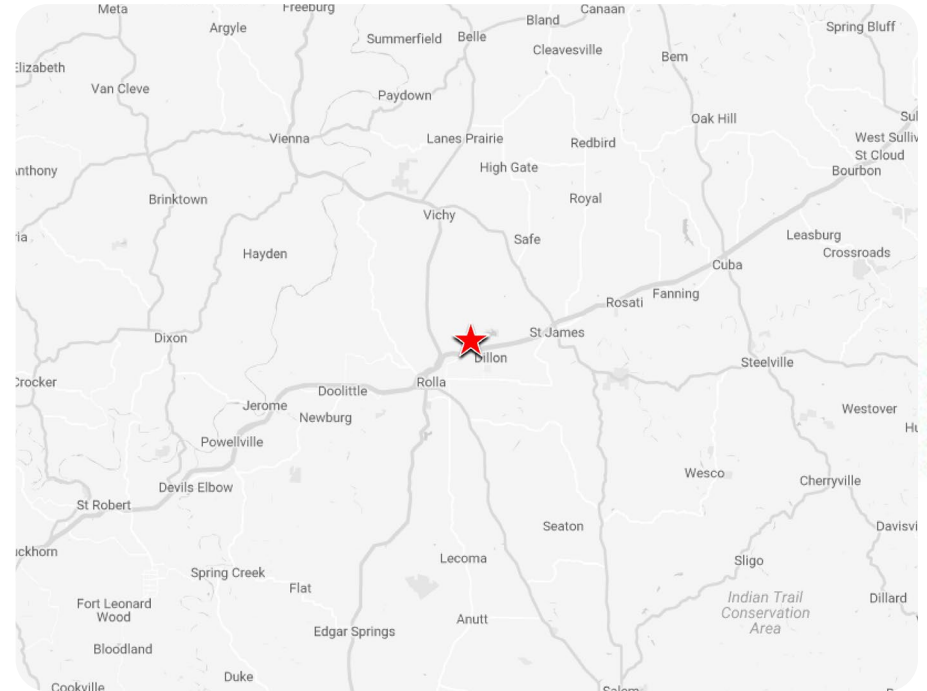
CONTACT US

Jason Morgan
314.560.8114 | jm@ccr-stl.com

Tommy Leonard
314.675.5240 | tleonard@ccr-stl.com

Property Details

- ▶ 45,470 +/- SF Out Lot Available
- ▶ Rolla is home to Missouri University of Science and Technology, Missouri's premier technological research university
- ▶ Rolla is less than 100 miles from St. Louis, Jefferson City, Columbia and Springfield
- ▶ Out Lot of newly opened QT Travel Center
- ▶ Conveniently Located off of I-44 and Exit 189 (Hy Point Industrial Drive)
- ▶ Zoned Commercial
- ▶ Potential uses could include car wash, hotel, fast food/QSR, automotive related use to name a few
- ▶ For Sale: \$549,000.00



2023 Demographics

RADIUS	POPULATION	DAYTIME EMPLOYMENT	AVG HH INCOME
1 Mile	429	894	\$130,749
3 Mile	10,911	4,054	\$73,200
5 Mile	26,172	14,965	\$73,093

Traffic Counts

- ▶ 3551 Hy Point Industrial Park Dr: 6,628 VPD
- ▶ I-44: 39,793 VPD

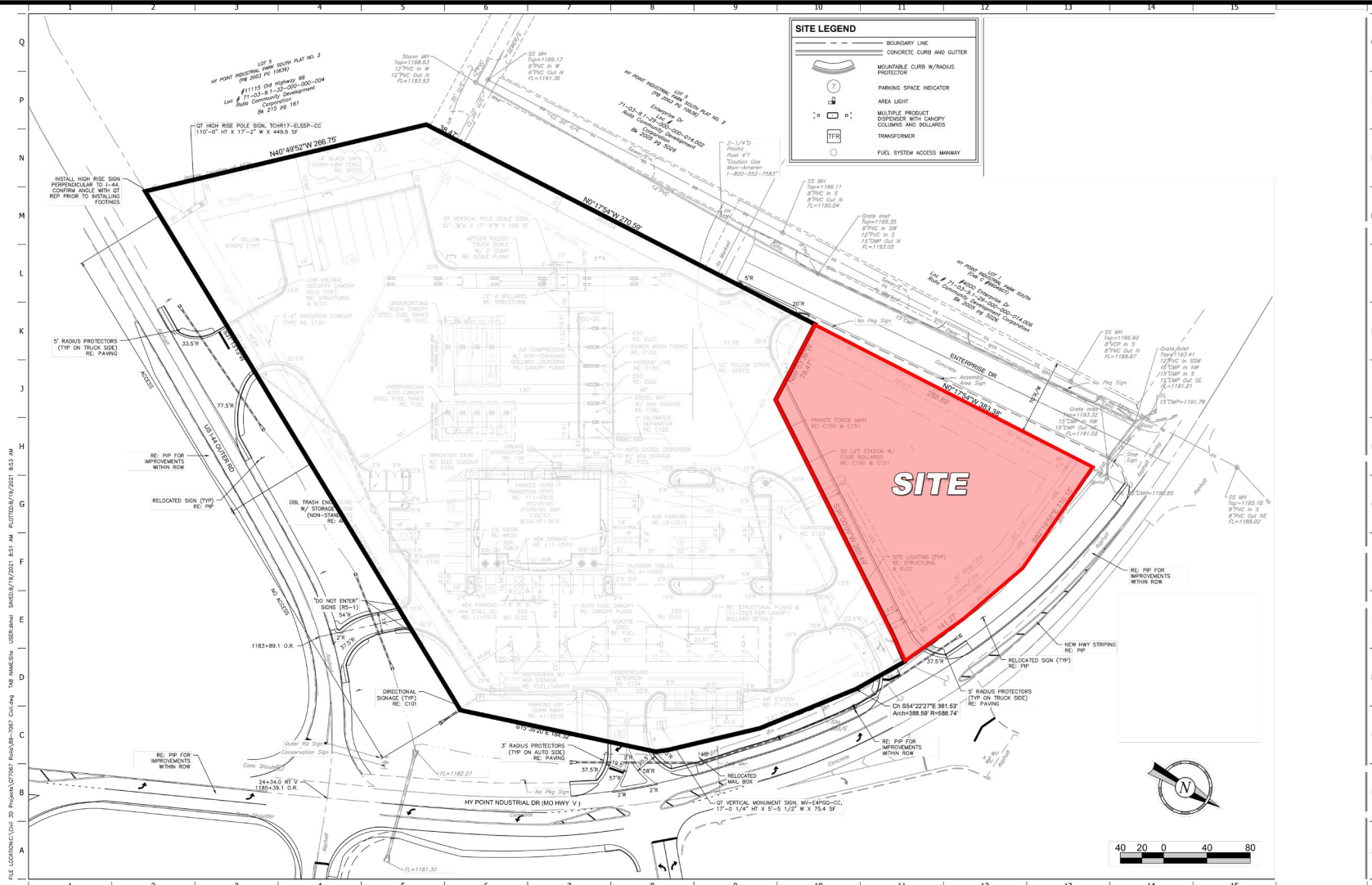
For Sale →

3551 HY POINT INDUSTRIAL PARK
Rolla, MO 65401

CONTACT US

Jason Morgan
314.560.8114 | jm@ccr-stl.com

Tommy Leonard
314.675.5240 | tleonard@ccr-stl.com



For Sale →

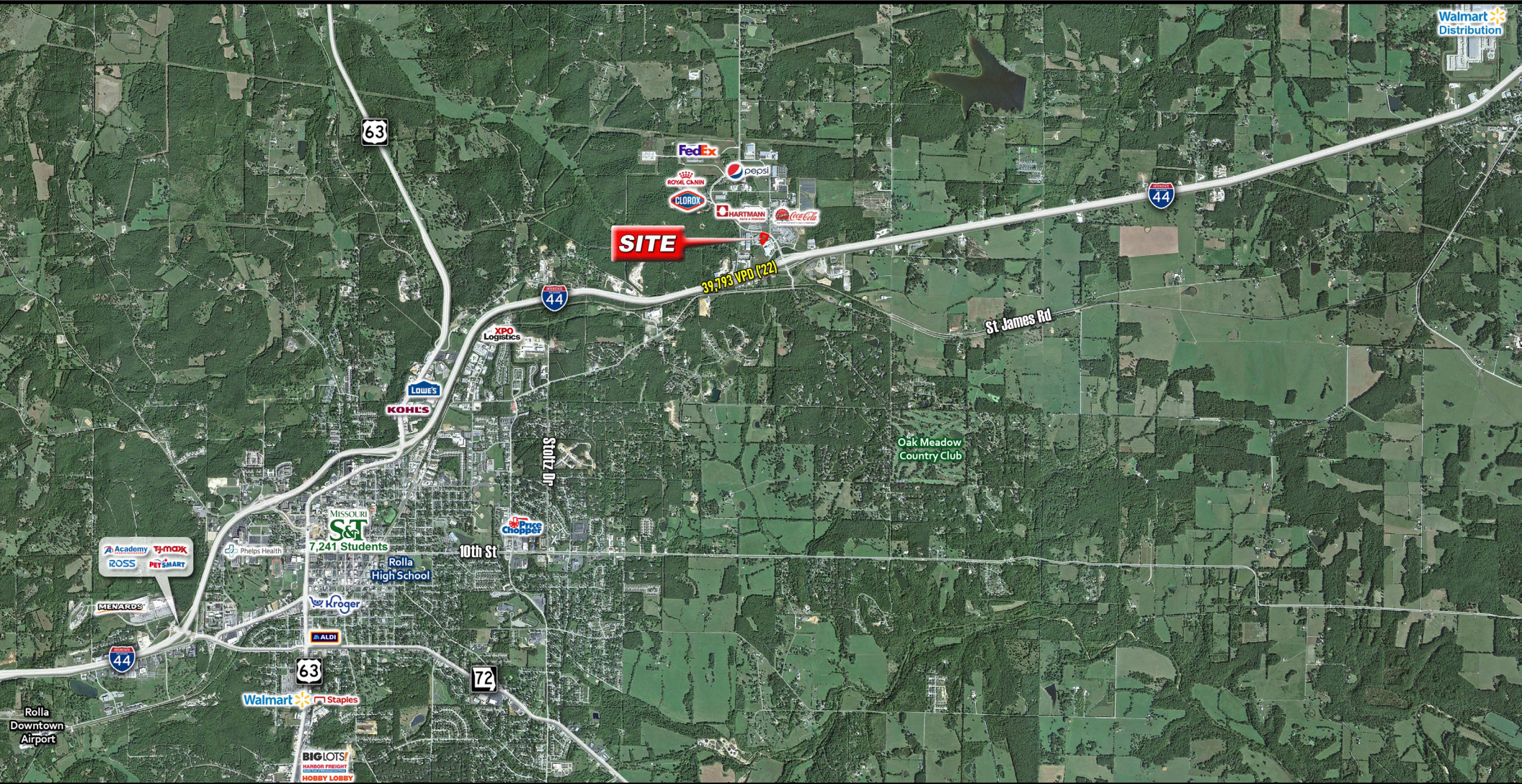
CONTACT US

3551 HY POINT INDUSTRIAL PARK
Rolla, MO 65401

Jason Morgan
314.560.8114 | jm@ccr-stl.com

Tommy Leonard
314.675.5240 | tleonard@ccr-stl.com

The information contained herein has been obtained from the owner of the property or from other sources. The brokers do not guarantee the accuracy of the information. Sellers and brokers make no representation as to the environmental or other condition of the property and recommend that purchaser/tenant investigate fully.



For Sale →

3551 HY POINT INDUSTRIAL PARK
Rolla, MO 65401

CONTACT US

Jason Morgan
314.560.8114 | jm@ccr-stl.com

Tommy Leonard
314.675.5240 | tleonard@ccr-stl.com