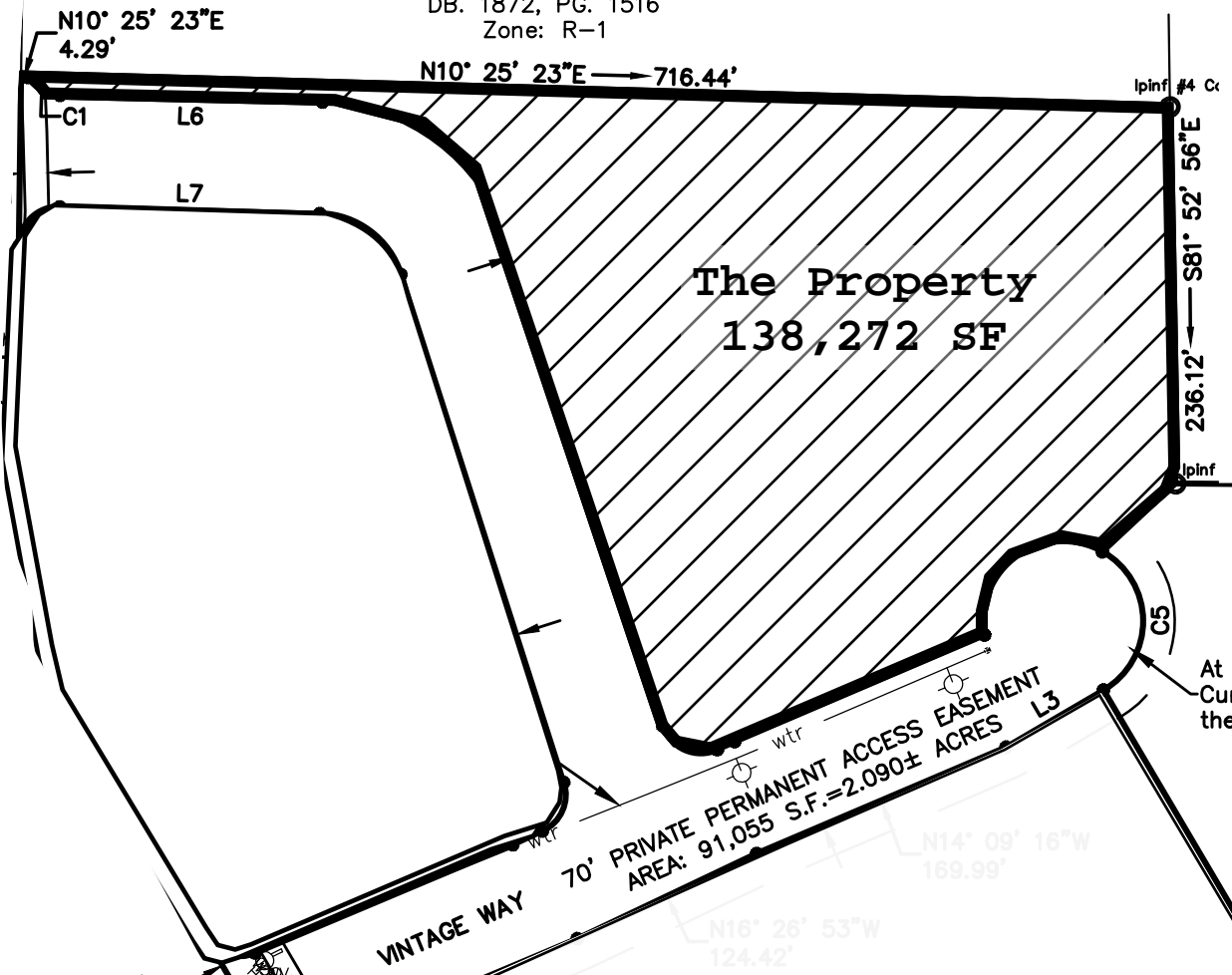


N/F  
Tanner Properties, GP.  
PIN: 057 01602 000  
DB. 1872, PG. 1516  
Zone: R-1



The Property  
138,272 SF

QuikTrip Store Property  
(Not for Sale)

POWELL ROAD  
(Variable Width  
Public Right-of-Way)

25' Utility Easement  
(Vol. 1032, PG. 304)  
(Vol. 1392, PG. 162)

ROSSVIEW ROAD (SR 237)  
(Variable Width Public Right-of-Way)

15' Utility Easement  
(Vol. 1630, PG. 230)

25' Utility Easement  
(Vol. 1032, PG. 304)  
(Vol. 1392, PG. 162)

POB  
N 811,310.34  
E 1,600,771.96

S27° 32' 14"W  
104.44'

S02° 32' 17"E  
118.59'

