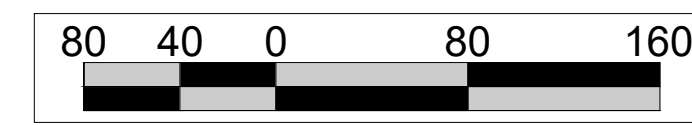
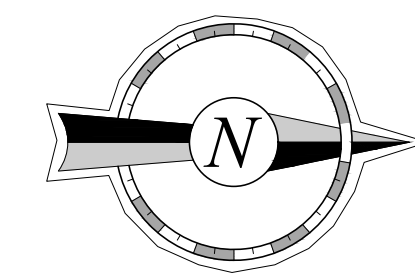
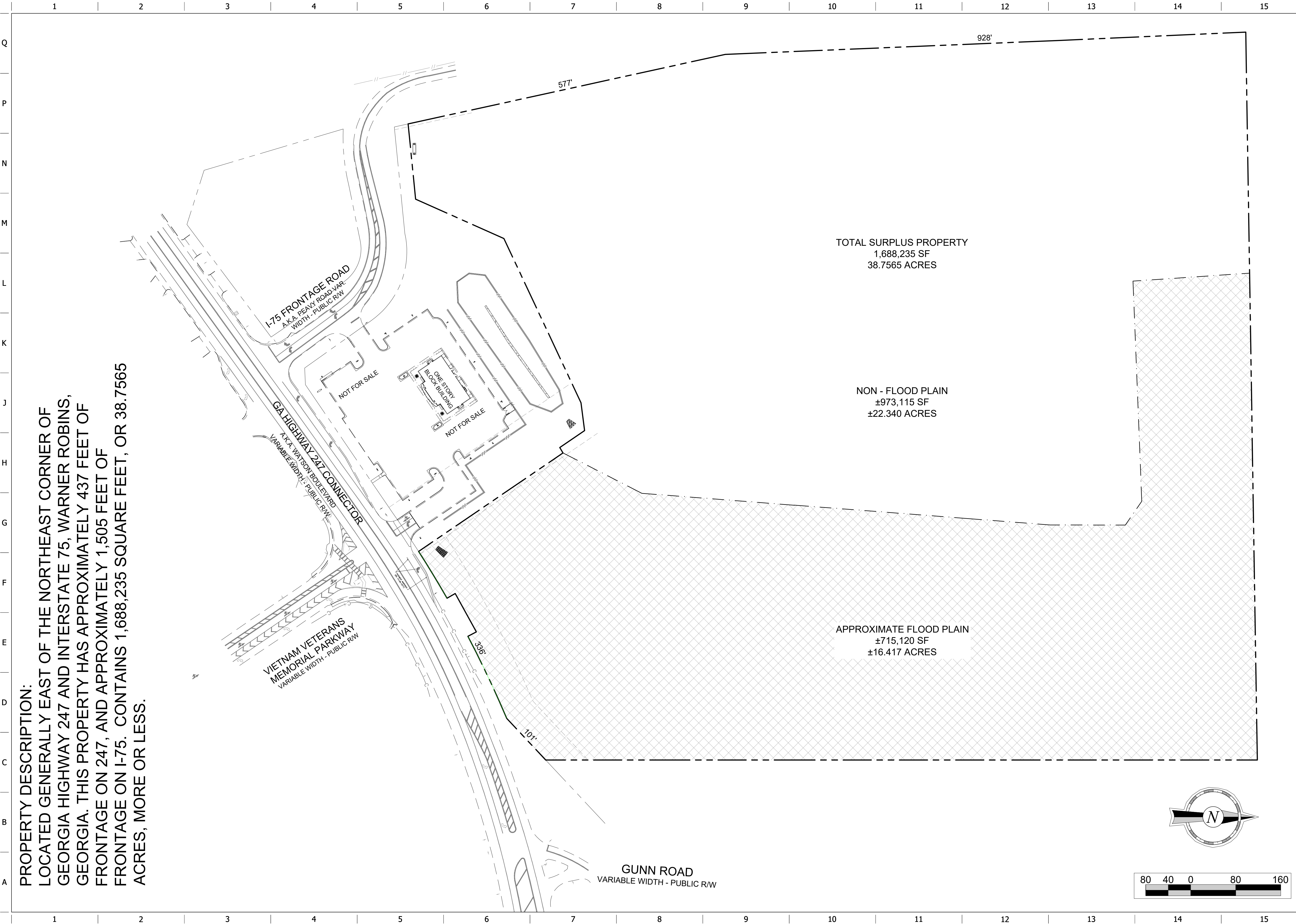


FILE LOCATION: \\c:\Users\j\OneDrive\Documents\07-Atlanta\07-Surplus Property Exhibits\07-E1731-Surplus 1.dwg TAB NAME: Initial Site Plan USER: jrbwrenn SAVED: 9/25/2020 8:09 AM PLOTTED: 12/18/2020 3:15 PM

PROPERTY DESCRIPTION:
 LOCATED GENERALLY EAST OF THE NORTHEAST CORNER OF
 GEORGIA HIGHWAY 247 AND INTERSTATE 75, WARNER ROBINS,
 GEORGIA. THIS PROPERTY HAS APPROXIMATELY 437 FEET OF
 FRONTAGE ON 247, AND APPROXIMATELY 1,505 FEET OF
 FRONTAGE ON I-75. CONTAINS 1,688,235 SQUARE FEET, OR 38.7565
 ACRES, MORE OR LESS.



PROJECT NO.:#####

QuikTrip No. E-1731-1
 WATSON BOULEVARD & 247 CONNECTOR
 WARNER ROBINS, GA



© COPYRIGHT QUIKTRIP CORPORATION 2011
 ANY UNAUTHORIZED USE, REPRODUCTION,
 PUBLICATION, DISTRIBUTION, OR SALE IN
 WHOLE OR IN PART, IS STRICTLY FORBIDDEN.

PROTOTYPE:
DIVISION:
VERSION: 001
DESIGNED BY:
DRAWN BY:
REVIEWED BY:

REV	DATE	DESCRIPTION	ORIGINAL ISSUE DATE:

SHEET TITLE:
 INITIAL SITE PLAN

SHEET NUMBER:
 1