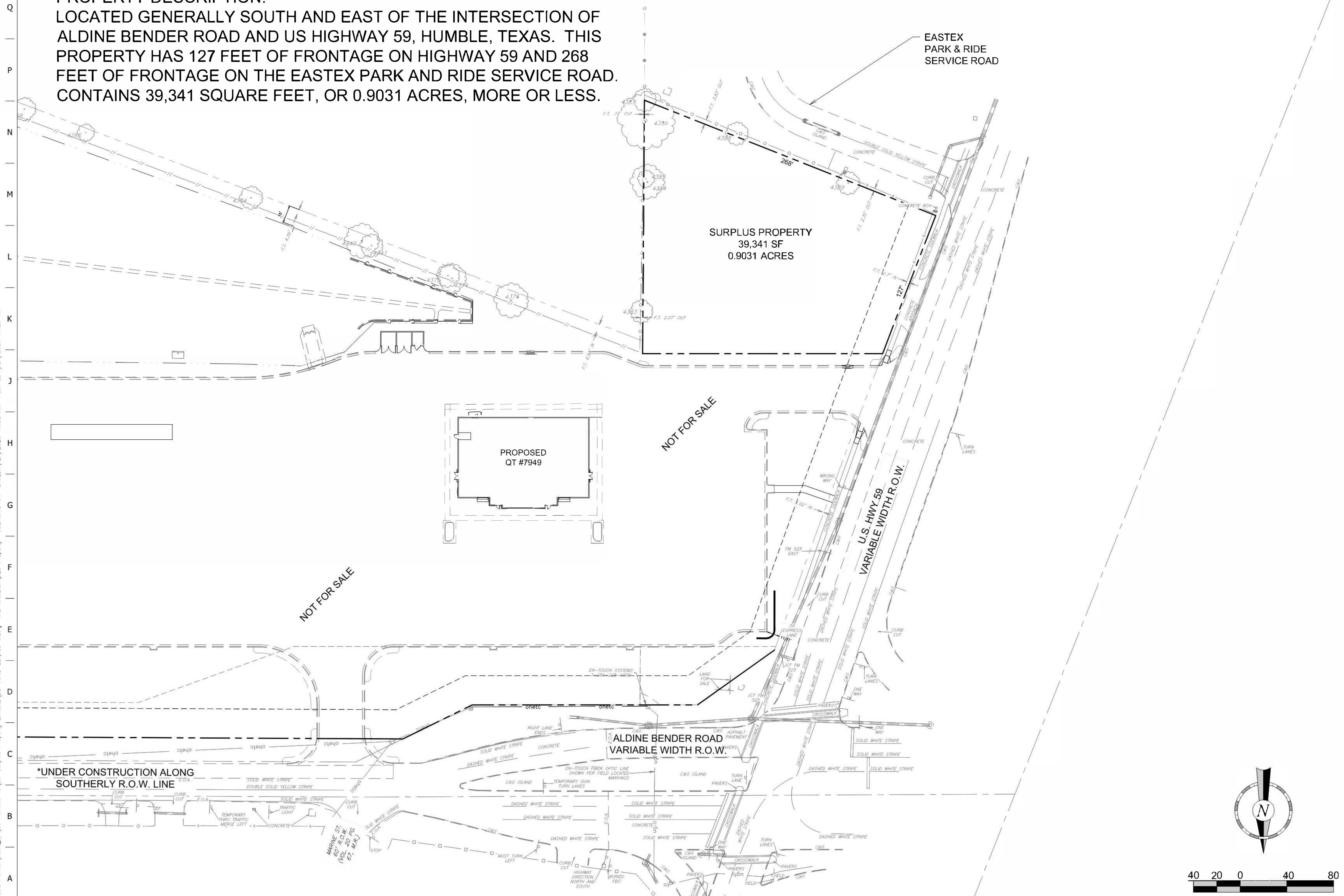


1 | 2 | 3 | 4 | 5 | 6 | 7 | 8 | 9 | 10 | 11 | 12 | 13 | 14 | 15

PROPERTY DESCRIPTION:
 LOCATED GENERALLY SOUTH AND EAST OF THE INTERSECTION OF
 ALDINE BENDER ROAD AND US HIGHWAY 59, HUMBLE, TEXAS. THIS
 PROPERTY HAS 127 FEET OF FRONTAGE ON HIGHWAY 59 AND 268
 FEET OF FRONTAGE ON THE EASTEX PARK AND RIDE SERVICE ROAD.
 CONTAINS 39,341 SQUARE FEET, OR 0.9031 ACRES, MORE OR LESS.



PROJECT NO.:

QuikTrip No. E7949-1
 6306 ALDINE BENDER ROAD
 HUMBLE, TX



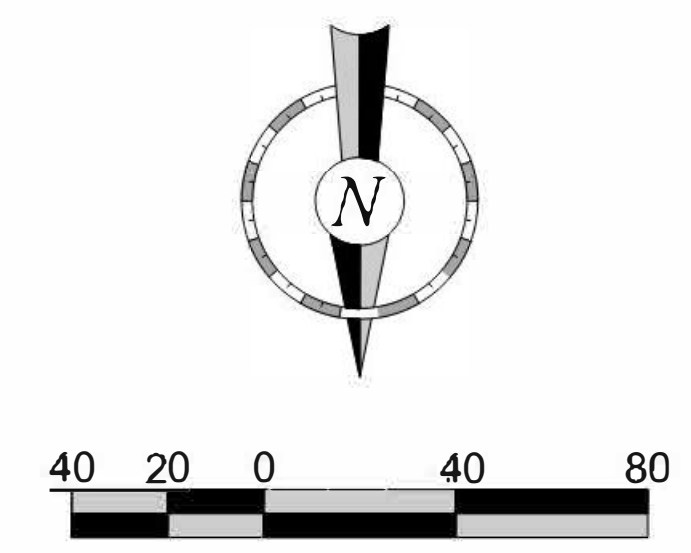
© COPYRIGHT QUIKTRIP CORPORATION 2011
 ANY UNAUTHORIZED USE, REPRODUCTION,
 PUBLICATION, DISTRIBUTION, OR SALE IN
 WHOLE OR IN PART, IS STRICTLY PROHIBITED.

PROTOTYPE: P-71 (05/01/12)
 DIVISION:
 VERSION: 001
 DESIGNED BY:
 DRAWN BY:
 REVIEWED BY:

REV	DATE	DESCRIPTION	ORIGINAL ISSUE DATE:

SHEET TITLE:
 SURPLUS PROPERTY

SHEET NUMBER:
 1



FILE LOCATION: C:\Vout\LOT_89 Remote TO_89-Surplus Property Exhibits\89-7949 Surplus 1.dwg TA# NAME: Surplus Property USER: barwarren SAVED: 7/27/2020 11:08 AM PLOTTED: 7/27/2020 11:23 AM

1 | 2 | 3 | 4 | 5 | 6 | 7 | 8 | 9 | 10 | 11 | 12 | 13 | 14 | 15