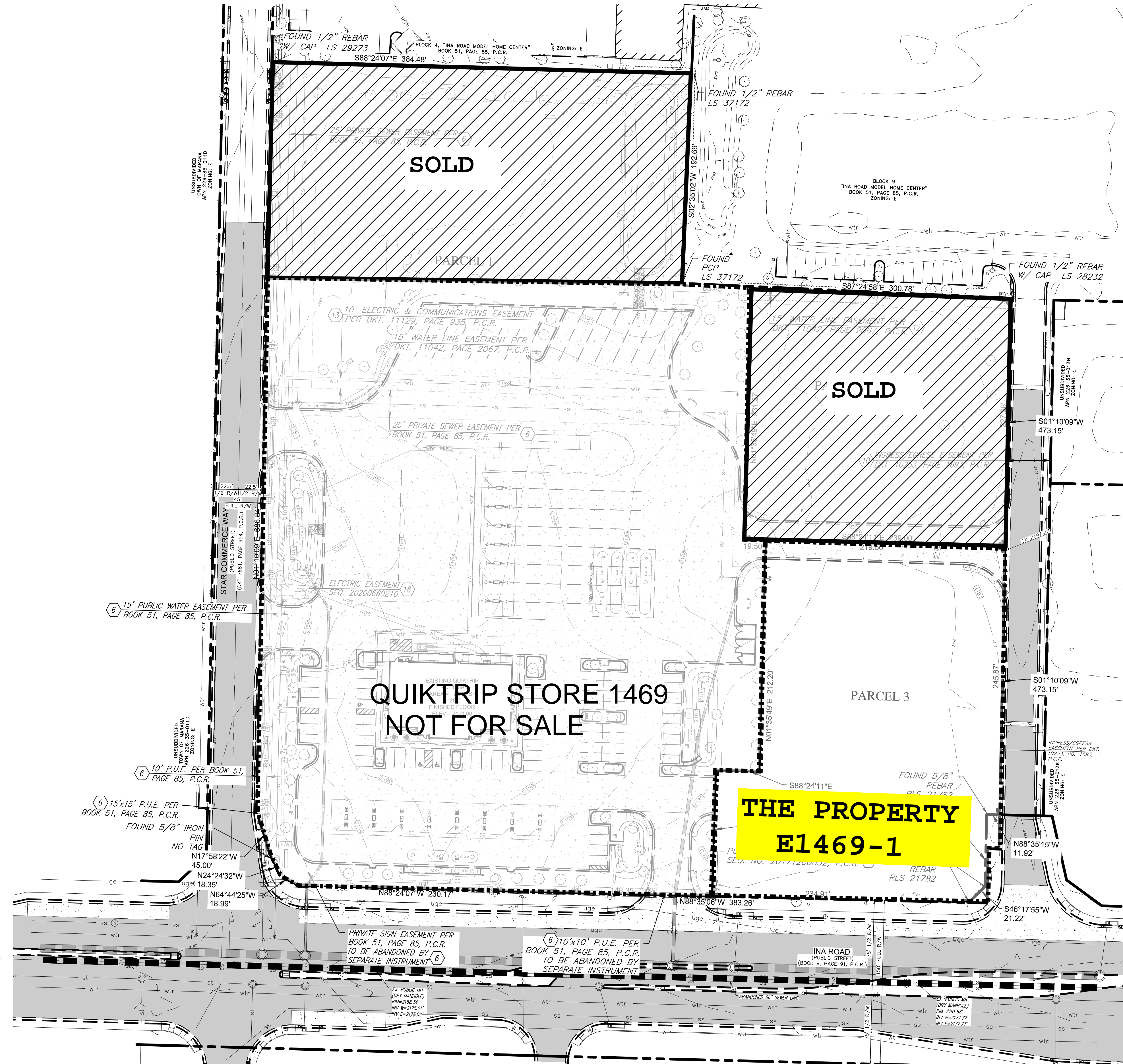
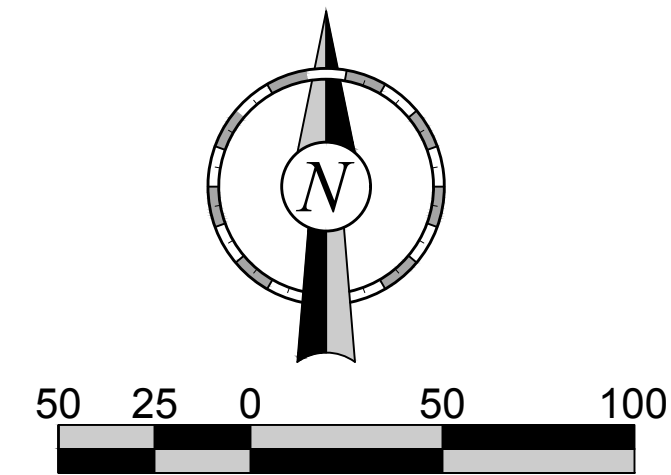


A.L.T.A./N.S.P.S. LAND TITLE SURVEY

A PORTION OF SECTION 9, TOWNSHIP 1 NORTH, RANGE 3 WEST OF THE GILA AND SALT RIVER BASIN AND MERIDIAN, MARICOPA COUNTY, ARIZONA

LEGEND

- BRASS CAP IN HANDHOLE
- FOUND MONUMENT AS NOTED
- SET MONUMENT AS NOTED
- VALVE
- FIRE HYDRANT
- WATER METER
- SEWER MANHOLE
- CLEAN OUT
- TRAFFIC SIGNAL
- TRAFFIC SIGNAL W/ MAST ARM
- POWER POLE
- GUY WIRE
- STREET LIGHT
- SIGN
- LIGHT POLE
- JUNCTION BOX
- PALM TREE
- PLOTTABLE SURVEY DESCRIPTION FROM SCHEDULE B, EXCEPTIONS
- I.C.V. IRRIGATION CONTROL VALVE
- STORM DRAIN LINE
- IRRIGATION LINE
- WALL
- FENCE
- RIGHT OF WAY LINE
- SECTION LINE
- CENTERLINE
- EASEMENT LINE
- BOUNDARY
- R/W RIGHT OF WAY
- M.C.R. MARICOPA COUNTY RECORDER
- APN ASSESSOR'S PARCEL NUMBER
- BO BLOW OFF VALVE
- ARV AIR RELEASE VALVE
- DOC. DOCUMENT
- AC PAVEMENT
- CONCRETE
- PAVERS



N:\110007\Store 1469\14-1469\01_Civil\00_Survey\as build\ALTA\14-1469_abbuilt_ALTA.dwg



Engineering • Planning • Surveying
Landscape Architecture • Urban Design
Offices located in: Tucson, Phoenix,
Flagstaff, and Las Vegas, NV.
1600 W Broadway Rd, Ste. 150
Tempe Az. 85282 PH.(480) 736-1600

QUIKTRIP #1469 @ 5050 W. INA ROAD
A PORTION OF SECTION 36, TOWNSHIP 12 SOUTH,
RANGE 12 EAST OF THE GILA & SALT RIVER
MERIDIAN, PIMA COUNTY, ARIZONA

No.	Date	Item	Scale	Sheet
			1"=50'	2
			Job # 112036-A-004	
			Date 09/15/20	
			Drawn By RAL	
			Checked By PDC	
				2