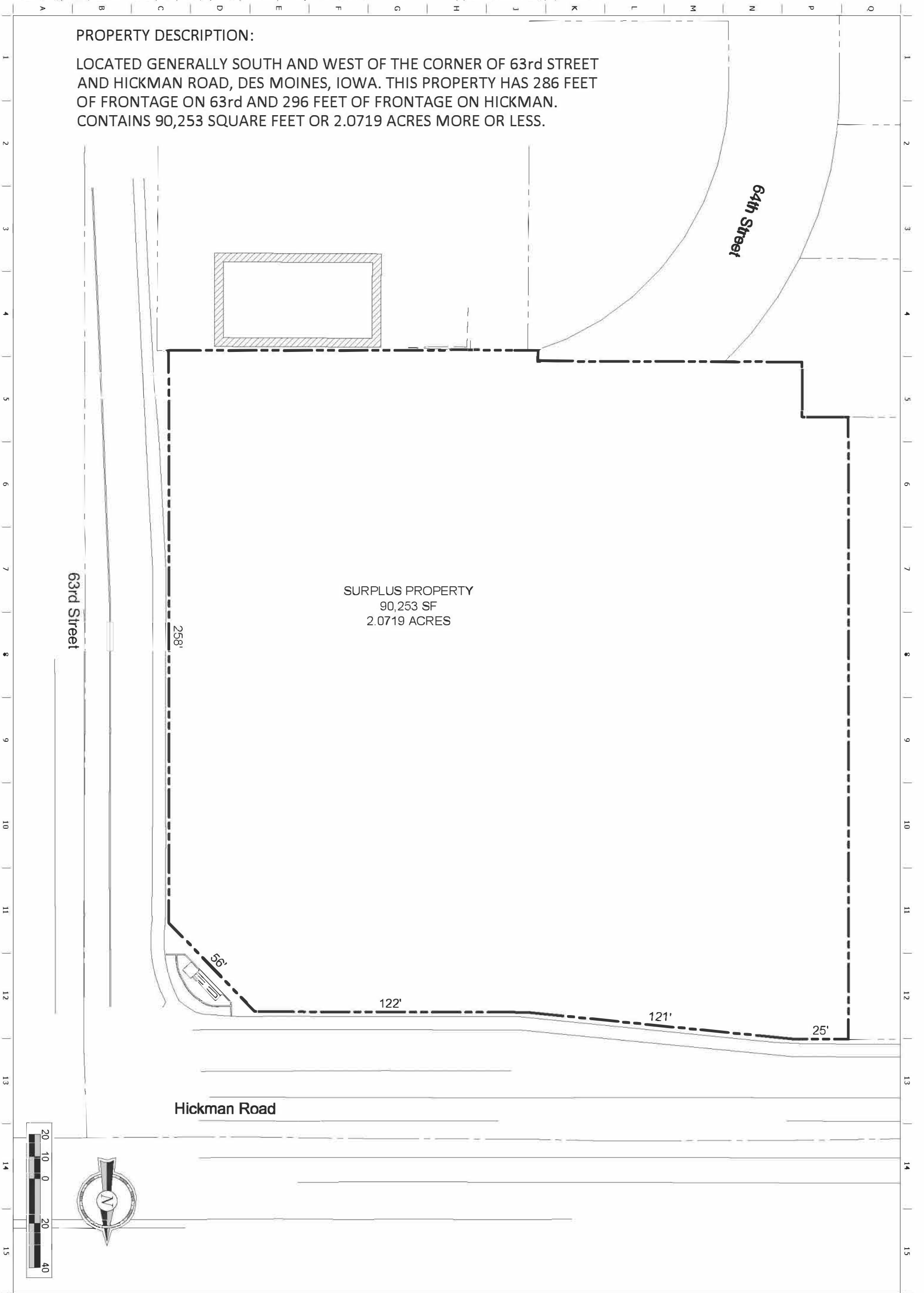


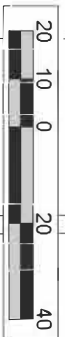
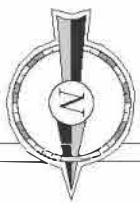
**PROPERTY DESCRIPTION:**

LOCATED GENERALLY SOUTH AND WEST OF THE CORNER OF 63rd STREET AND HICKMAN ROAD, DES MOINES, IOWA. THIS PROPERTY HAS 286 FEET OF FRONTAGE ON 63rd AND 296 FEET OF FRONTAGE ON HICKMAN. CONTAINS 90,253 SQUARE FEET OR 2.0719 ACRES MORE OR LESS.



SURPLUS PROPERTY  
90,253 SF  
2.0719 ACRES

Hickman Road



SHEET NUMBER <b>1</b>	SHEET TITLE INITIAL SITE PLAN	REV   DATE   DESCRIPTION	PROJECT: QUICKTRIP NO. E504 63rd STREET & HICKMAN ROAD DES MOINES, IA	PROJECT NO: #####
		ORIGINAL ISSUE DATE:		
DESIGNER: [ ] DRAWN BY: [ ] REVIEWED BY: [ ]		QUICKTRIP A DIVISION OF THE QUICKTRIP GROUP 1000 EAST 10TH AVENUE, SUITE 100 DES MOINES, IOWA 50319		