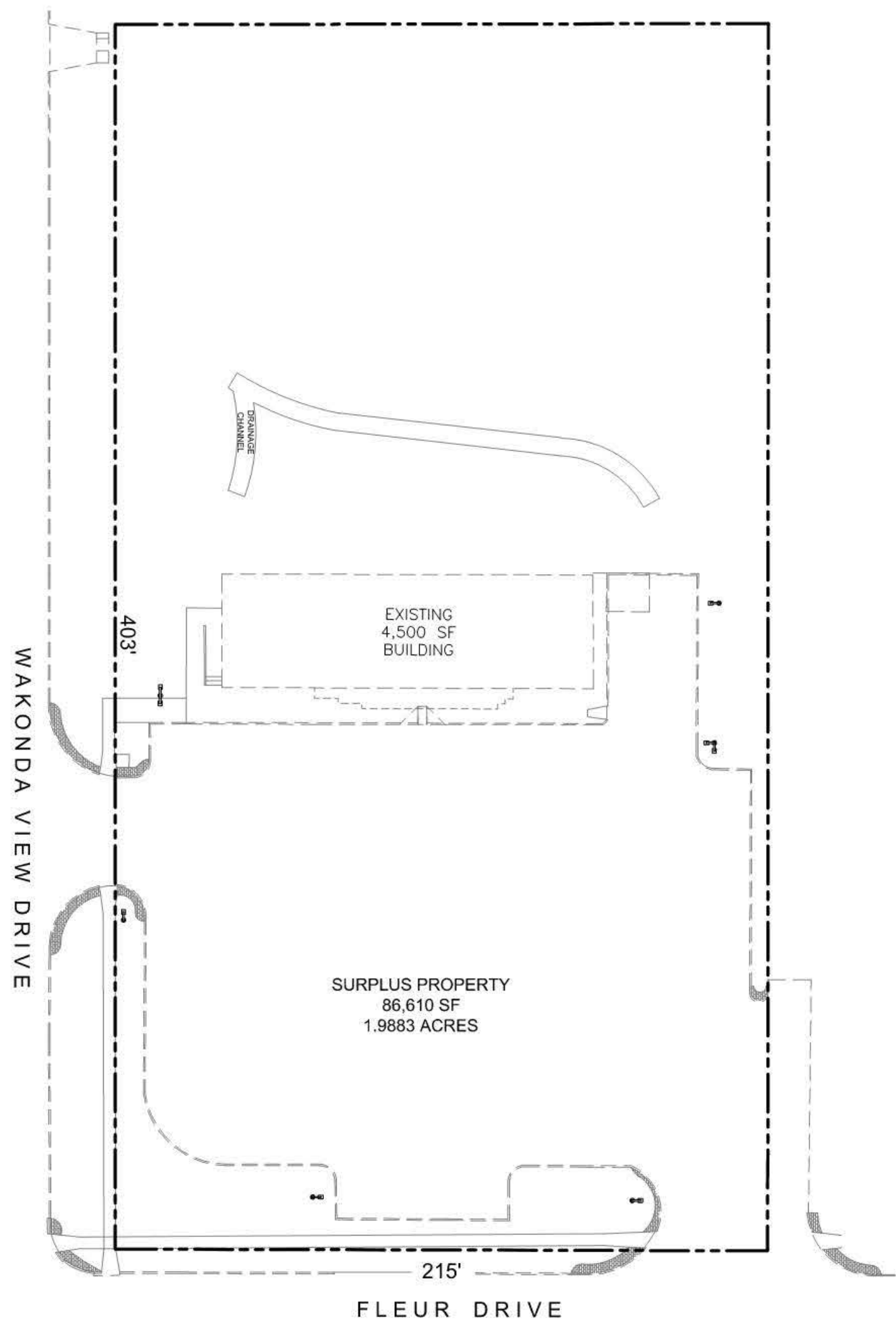


PROPERTY DESCRIPTION:
 LOCATED GENERALLY NORTH AND WEST OF THE INTERSECTION OF FLEUR DRIVE AND WAKONDA VIEW DRIVE, DES MOINES, IOWA. THIS PROPERTY HAS 215 FEET OF FRONTAGE ON FLEUR AND 403 FEET OF FRONTAGE ON WAKONDA . CONTAINS 86,610 SQUARE FEET, OR 1.9883 ACRES, MORE OR LESS.



WAKONDA VIEW DRIVE

FLEUR DRIVE

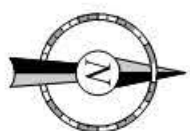
SURPLUS PROPERTY
 86,610 SF
 1.9883 ACRES

EXISTING
 4,500 SF
 BUILDING

DRAINAGE
 CHANNEL

403'

215'



SHEET NUMBER: 1	SHEET TITLE: SURPLUS PROPERTY	REV DATE DESCRIPTION	PROTOTYPE: P-43 DIVISION: 07 VERSION: 01 DESIGNED BY: DRAWN BY: DMW REVIEWED BY:		QuikTrip No. E559-1 4024 FLEUR DRIVE DES MOINES, IA	PROJECT NO.:
		ORIGINAL ISSUE DATE: 08-03-17				