

**PROPERTY DESCRIPTION:**

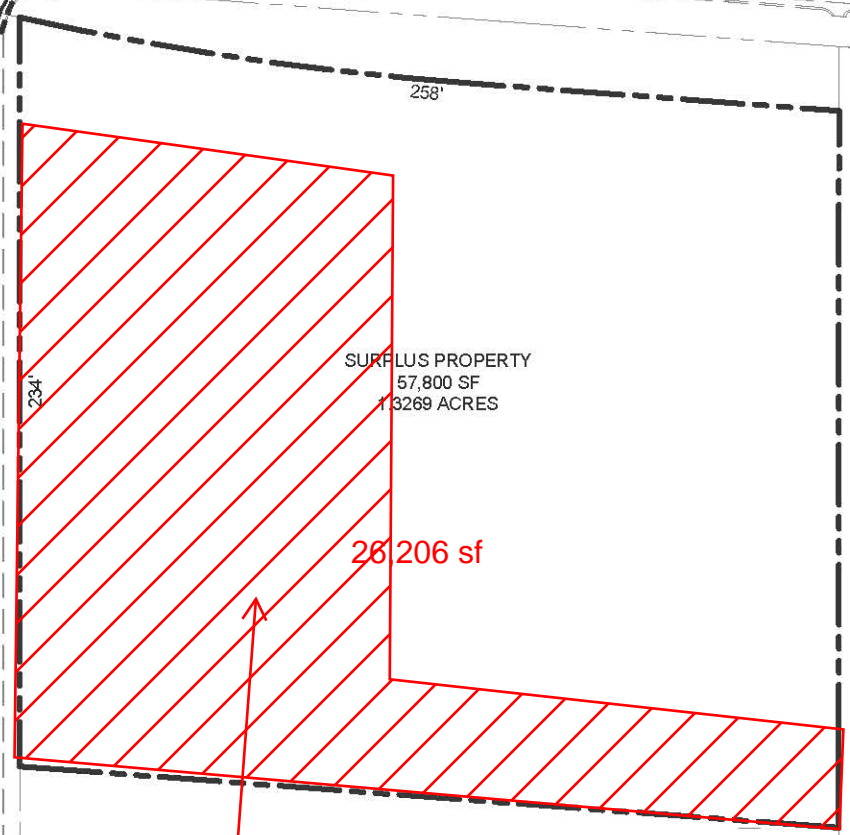
LOCATED TO THE SOUTH AND WEST OF THE INTERSECTION OF HIGHWAY 100 AND KIEFER CREEK ROAD, ELLISVILLE, MISSOURI. THIS PROPERTY HAS 258 FEET OF FRONTAGE ON KIEFER CREEK AND IS DIRECTLY ADJACENT TO EXISTING QUIK TRIP STORE NUMBER 634 FOR 234 FEET. CONTAINS 57,800 SQUARE FEET, OR 1.3269 ACRES, MORE OR LESS.

HIGHWAY 100  
(A.K.A. MANCHESTER ROAD)

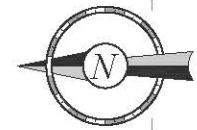
COMMERCIAL  
1-STORY BRICK & STUCCO BUILDING  
FINISHED FLOOR-733.0  
15924 MANCHESTER RD.

NOT FOR SALE

KIEFER CREEK ROAD



Actual surplus property available.



PROJECT NO.:

**QuikTrip No. 4634-2**

16100 MANCHESTER ROAD  
ELLISVILLE, MO



© COPYRIGHT QUIKTRIP CORPORATION 2011  
ANY UNAUTHORIZED USE, REPRODUCTION,  
PUBLICATION, DISTRIBUTION, OR SALE IN  
WHOLE OR IN PART, IS STRICTLY PROHIBITED.

PROTOTYPE: P-71 (05/01/12)  
DIVISION:  
VERSION: 001  
DESIGNED BY:  
DRAWN BY:  
REVIEWED BY:

REV	DATE	DESCRIPTION	ORIGINAL ISSUE DATE:

SHEET TITLE:

SURPLUS PROPERTY

SHEET NUMBER:

1